

**WAGNERIANA LEVII, A NEW SPECIES OF ARANEIDAE FROM
BRAZIL (ARANEAE)**

**Ricardo Pinto-da-Rocha¹
Erica Helena Buckup²**

ABSTRACT

Wagneriana levii, sp. n., is described based on a male from Usina Hidrelétrica de Segredo, Pinhão, State of Paraná, Brazil.

KEYWORDS. Araneae, Araneidae, *Wagneriana*, new species, Neotropical.

INTRODUCTION

The genus *Wagneriana* F. Pickard-Cambridge, 1904, recently reviewed by LEVI (1991), included 39 species distributed mainly on Neotropics, except *W. tauricornis* (O. P. - Cambridge, 1889) which extends its range to temperate North America (Florida) and *W. spicata* (O. P. - Cambridge, 1889) found also in Mexico. From those 39 known species, 24 of them are represented by both sexes, five only from males and ten by females.

A male specimen of *Wagneriana levii*, sp. n., here described, was collected during the faunistic studies on the area of the "Usina Hidroelétrica de Segredo (Companhia de Energia Elétrica do Paraná and Fundação de Estudos Florestais do Paraná)" carried out by senior author and biologists of Museu de História Natural "Capão da Imbuia", during 1991 and 1992.

The allocation of the new species in the genus *Wagneriana* is based on the following male characters, considered diagnostic by LEVI (1991): paramedian apophysis of palpus L-shaped rod; terminal apophysis and embolus fused; modified base of the median apophysis with teeth; one patellar macrosetae on the palpus; endite with a large tooth facing a tubercle of palpus femur; and one macrosetae on fourth trochanter.

Abbreviations used in the text: AME, anterior median eyes, ALE, anterior lateral eyes; PME, posterior median eyes; PLE, posterior lateral eyes; p, prolateral; r, retrolateral; d, dorsal; v, venter. Measurements are in millimeters.

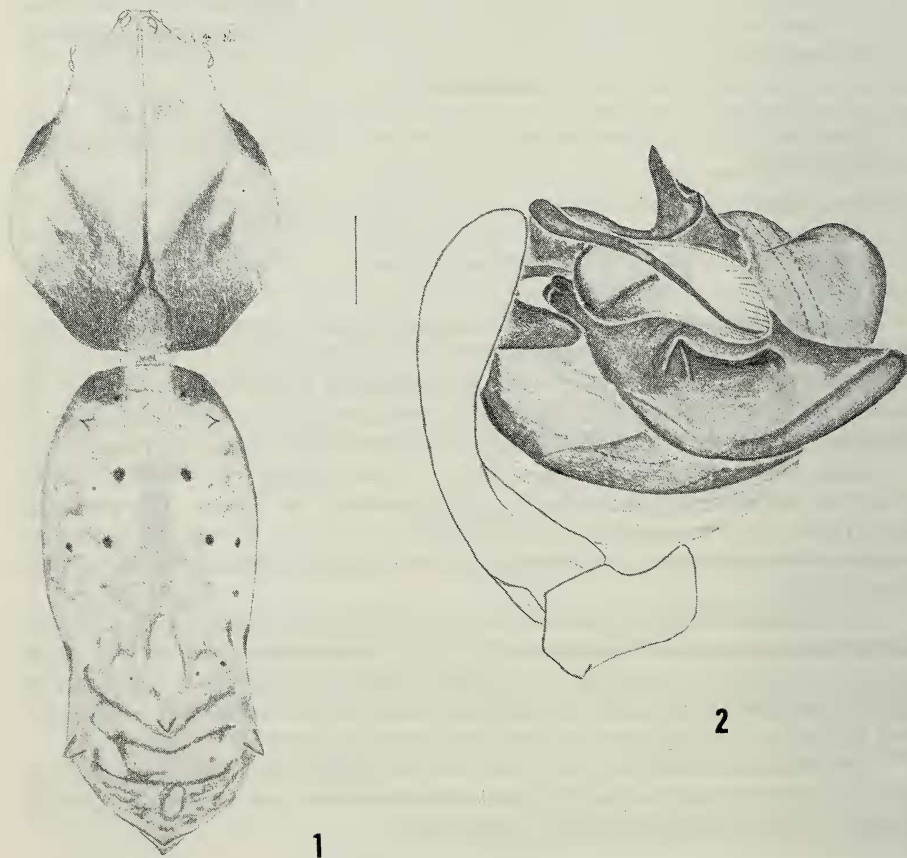
***Wagneriana levii*, n. sp.**

(Figs. 1, 2)

Holotype. Male, Pinhão (Usina Hidroelétrica Segredo, Barra do Capoteiro), Paraná,

1. Museu de Zoologia, Universidade de São Paulo, Caixa Postal 7172, 01064-970, São Paulo, SP, Brasil. (Grant from FAPESP - 91/4054-7).

2. Museu de Ciências Naturais, Fundação Zoobotânica do Rio Grande do Sul, Caixa Postal 1188, 90001-970, Porto Alegre, RS, Brasil.



Figs. 1,2. *Wagneriana levii*, sp. n., male holotype. 1, dorsal view; 2, left palpus, mesal view. Scale lines fig. 1, 1.0 mm; fig. 2, 0.5 mm.

Brazil, 21.II.1992, R. Pinto-da-Rocha col., deposited in the Museu de História Natural "Capão da Imbuia" (Curitiba, Paraná).

Etymology. The specific name is a patronimic in honor of Dr. Herbert Levi (Museum of Comparative Zoology), in recognition of his revisionary works on Araneidae.

Diagnosis. The male palpus of *W. levii*, sp. n., differs from similars, *W. transitoria* (C. L. Koch, 1839) and *W. tayos* Levi, 1991 (LEVI, 1991: 379, 407, figs. 44, 170, respectively), by the shape of the base of terminal apophysis, the long filiform embolus arising close to the distal edge of the cymbium and the shape of median apophysis with a median keel (fig. 2).

Male (fig. 1). Total length 7.50. Carapace: 3.12 long, 2.48 wide; abdomen 4.33 long, 1.89 wide. Cephalic area with white setae. Carapace dark yellow anteriorly, brown laterally and dark brown posteriorly. Sternum dark yellow. Eyes size and interdistances: AME 0.12; ALE 0.08; PME 0.12; PLE 0.10; AME-AME 0.16; AME-ALE 0.40; PME-PME 0.16; PME-PLE 0.52. Abdomen dorsal, with several white and black spots irregularly distributed; venter, with U-shaped white spot in front of spinnerets. Abdomen truncate behind spinnerets, dorsally with one anterior and one posterior pairs of tubercles and three median tubercles posteriorly. Legs yellowish; femurs I-III with ventral black spots; IV with one large black ring; tibiae I-IV dark yellow. Coxa I with distal retrolateral apophysis on apex. Trochanter IV with one macrosetae. Legs spination: femura I d 3, p 3, r 3, v 4; II d 3, p 1, r 2, v 7; III d 2, p 1, r 1; IV, d 4, p 1, r 1, v 11; patellae I-II p 2, d 1, r 1; III-IV p 1, r 1, d 1; tibiae I d 2, p 6, r 3, v 3; II, d 7, r 1, v 8, (v and r thick); III-IV d 1, p 1, r 1, v 6; metatarsi III d 1; IV d 1, p 1. Femura length: 3.76/3.04/ 1.96/2.76. Patellae: 1.24/ 1.16/ 0.84/ 1.00. Tibiae: 2.72 /2.00 / 1.20/ 1.80. Metatarsi: 2.20/ 2.08/ 1.12/ 1.72. Tarsi: 0.92/ 0.92/ 0.64/ 0.72. Total: 10.84/ 9.20/ 5.76/ 8.00.

Remarks. The male of *W. levii* seems no to be conspecific with the ten species known only by females, regarding the number of abdominal tubercles, all with more than 10 tubercles, except *W. turrigera* Schenckel, 1953, with eight. The last species may not belong to the genus, after LEVI (1991). From these species only *W. juquia* Levi, 1991, overlap the distribution of *W. levii* but LEVI (1991) suggested that it might be the female of *W. uropygialis* (Mello-Leitão, 1994).

Acknowledgments. To Dr. Herbert W. Levi for the sugestions; to "Companhia de Energia Elétrica do Paraná" and "Fundação de Pesquisas e Estudos Florestais do Paraná" for the financial and field support for the senior author.

REFERENCES

- LEVI, H.W. 1991. The Neotropical orb-weaver genera *Edricus* and *Wagneriana* (Araneae: Araneidae). **Bull. Mus. Comp. Zool.**, Cambridge, Mass., 152 (6): 363-415.